

EPA - LOGISTICS



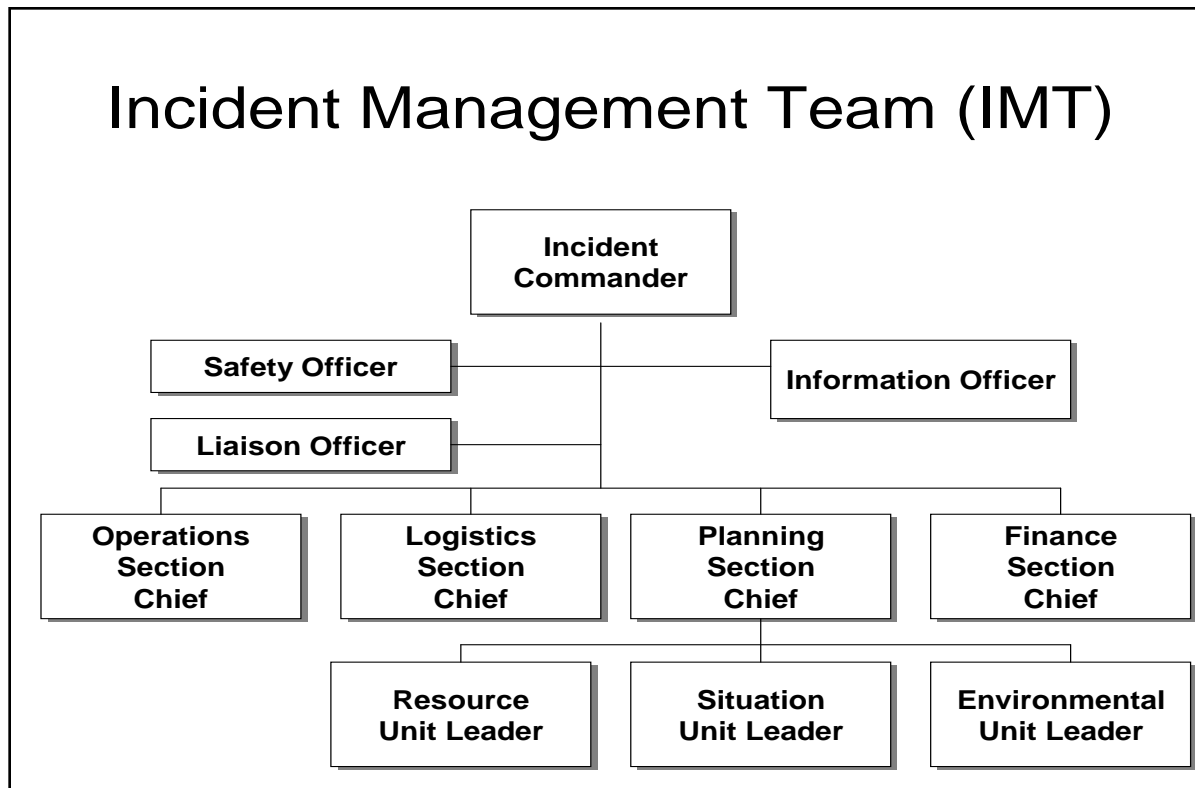
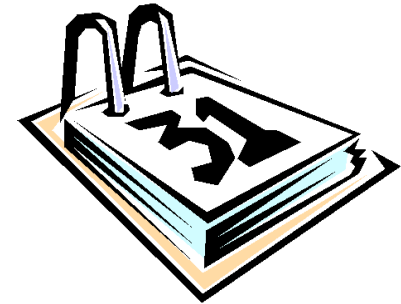
Difficult Response Conditions

Provide Infrastructure Support for Response Operations in austere environments

- Region deploys resources early during an event
- Self Contained, Self Sufficient 3 Days
- Voice And Data Communications
- Workspace, Lodging, Food And Security

Region 6 Incident Management Teams

- 3 Teams: Red, White, Blue
- Will start 6-week "readiness" rotations in January
- Staff are specifically trained for 11 "Key Leadership Positions"



Emergency Response Contracts and Acquisitions

START



Purchase Card



ERRS



**Notice to Proceed
Letter Contract**



BPA's



Private Sector Response Organizations

Oil Spill Response Organizations (OSROs)



Mutual Aid Associations

© Scott Teven photohouston.com



713-862-9410

F10-06



ASPECT

ASPECT (Airborne Spectral Photometric Environmental Collection Technology), the nation's only 24/7 emergency response aircraft with chemical plume mapping capability, uses infrared technology to visualize invisible, odorless chemicals in the air. ASPECT detectors can determine chemical composition of plume and its level of concentration from a distance, alerting emergency crews on the ground of potential hazards.



TAGA

The Trace Atmospheric Gas Analyzer (TAGA) is a self-contained mobile laboratory capable of real-time sampling and analysis in the low parts per billion level of outdoor air or emissions from various environmental sources and concerns. In addition, the TAGA has specialized sampling equipment for measuring indoor air and at remote locations.



United States
Environmental Protection
Agency

U.S. Environmental
Protection Agency

Region 6

10.10.2008

EPA MCP



LRV 2

This “office on wheels” contains telephone and internet connections, televisions, a presentation room, and a satellite to facilitate conference calls.

EPA Mobile Command Post/Living Quarters



LRV 1





**Mobile
Laboratory**



Level A Truck w/Breathing Air Compressor



Contract helicopters for reconnaissance of impacted areas, to identify emergency situations, extent of orphaned containers, and status of critical facilities (DHS critical infrastructure, RMP/FRP facilities)

Field Assets

Region 6
MCPs and
LCPs



ERT
Sampling
Vehicle



ASPECT Plane



Houston Lab/
Mobile Lab



TAGA



19' Boston Whaler





ATVs

Environmental Monitoring



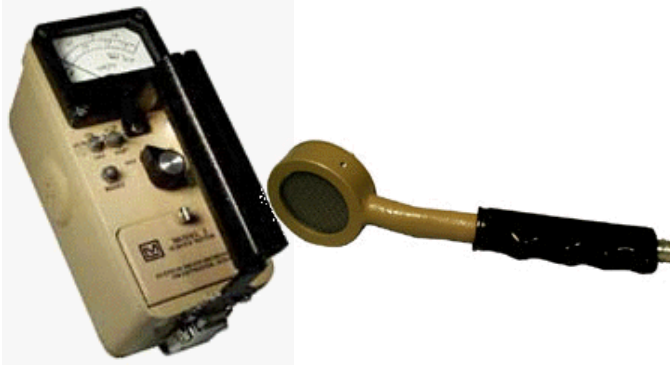
HazCat



DataRAMs

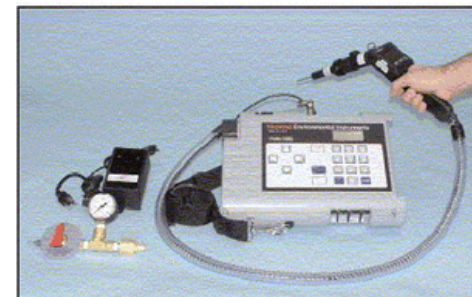


Multi Rae



Ludlum and Pancake Probe

TVA –Toxic Vapor Analyzer



Region 6 ER Large Equipment

Command Posts	3	Pickups	5
Command Trailers	2	SUVs	2
Cargo Trailers	3	Car	1
Comms Trailer	1	Skidsteer	1
Utility Trailer	2	ATVs	5
Water Trailer	1	Mules	2
Air Stripper	1	Boats	4
Level A Truck	1	Breathing Air	1

What are Special Forces Available Through the NRS?

- EPA's Environmental Response Team (ERT)
- EPA's National Decon Team (NDT)
- EPA's Radiological Environmental Response Team (RERT)
- NOAA and EPA Scientific Support Coordinator (SSC)
- USCG National Strike Force (NSF)
- USCG District Response Groups (DRG)
- USCG Public Information Assist Team (PIAT)
- Navy Supervisor of Salvage (SUPSALV)
- Radiological Assistance Teams (RATs)

